

## Isolation and identification of *E. coli* and *Salmonella* from poultry litter and feed



**Plate 1:** Growth of *E. coli* and *Salmonella* on NB indicated by turbidity.



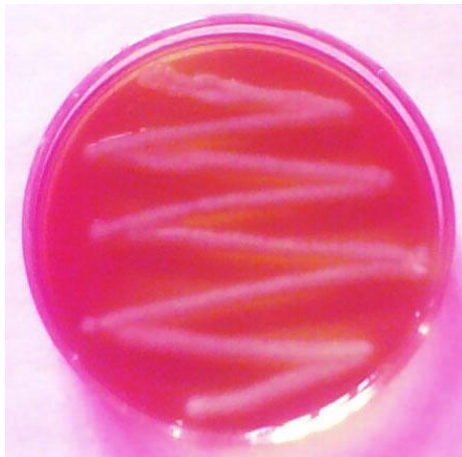
**Plate 2:** Circular, smooth, colorless colonies of *E. coli* and translucent colonies of *Salmonella* on nutrient agar.



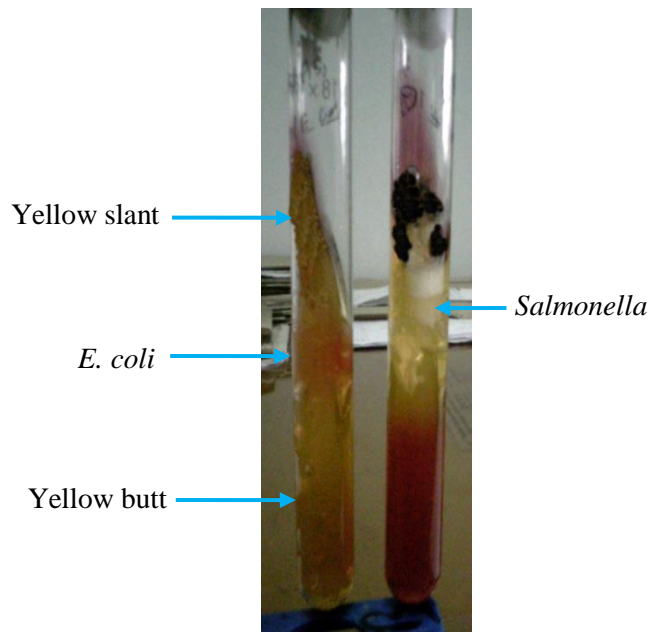
**Plate 3:** Growth of *E. coli* on EMB agar showing greenish black colony with characteristic metallic sheen.



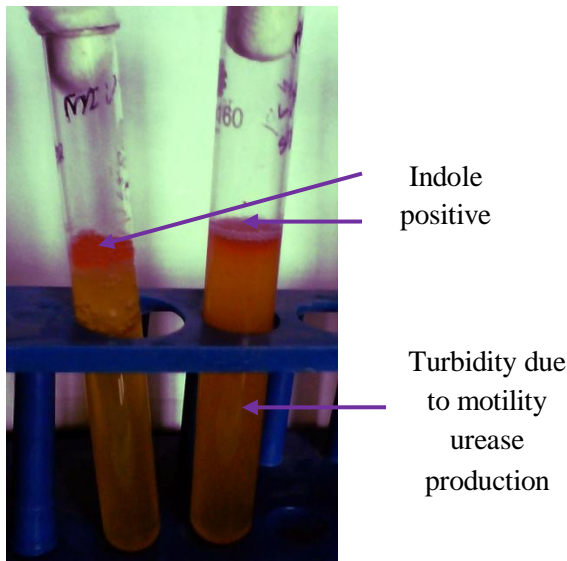
**Plate 4:** Bright, pink colored transparent smooth raised colony of *E. coli* on MacConkey's agar.



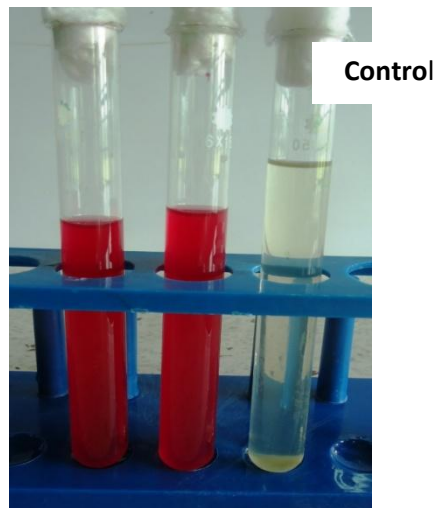
**Plate 5:** Growth of *E. coli* on SS agar showing slight pink smooth colony.



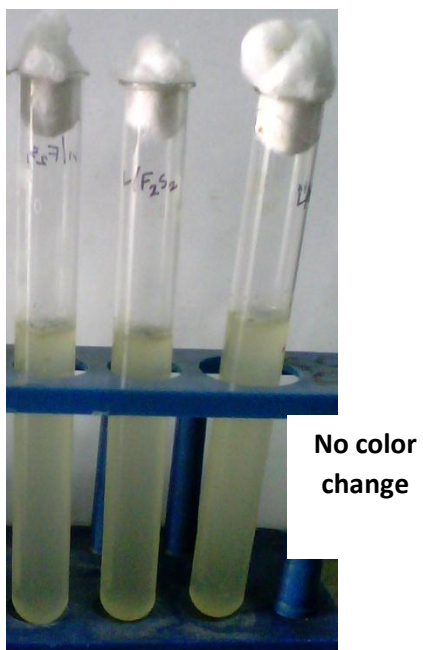
**Plate 6:** *E. coli* in TSI Medium showing yellow color Butt and Slant; huge gas production but no H<sub>2</sub>S



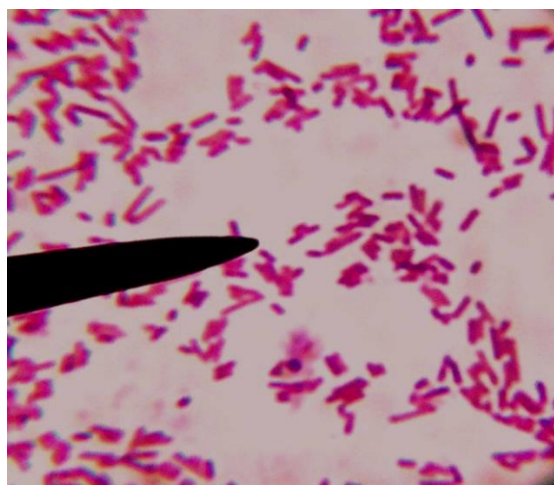
**Plate 7:** *E. coli* in MIU medium causing turbidity and urease production.



**Plate 8:** *E. coli* showing positive results with bright red color in Methyl red tests.



**Plate 9:** *E. coli* showing negative results in Voges-Proskauer test.



**Plate 10:** A microscopic field showing Gram negative rod shaped *E. coli* bacteria arranged in single, pair or short chain (100X).

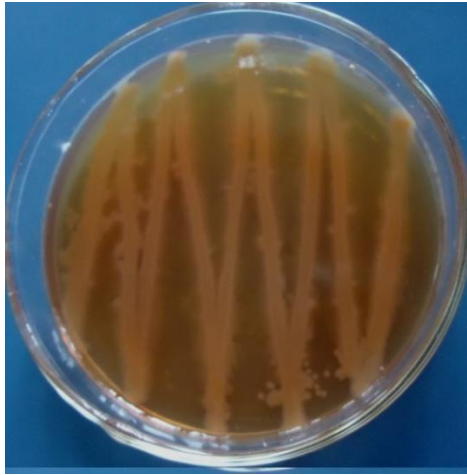


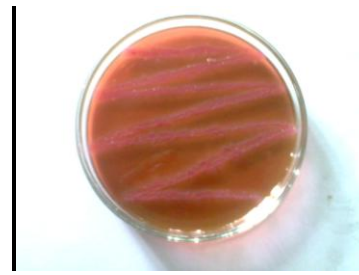
Plate 11: Growth of *Salmonella* on SS agar showing raised, smooth, colorless, translucent colonies.



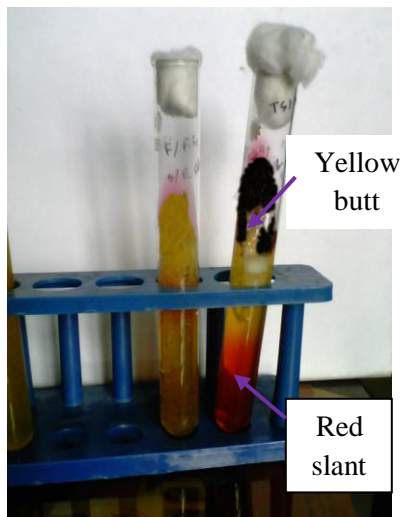
Plate 12: Growth of *Salmonella* on BGA showing pale pink color colonies against a pinkish background.



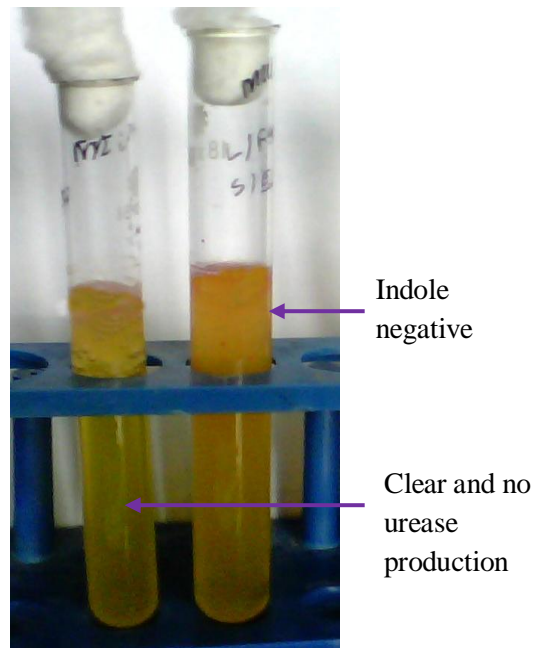
**Plate 13:** Growth of *Salmonella* on MC agar showing colorless, smooth, pale and transparent raised colonies.



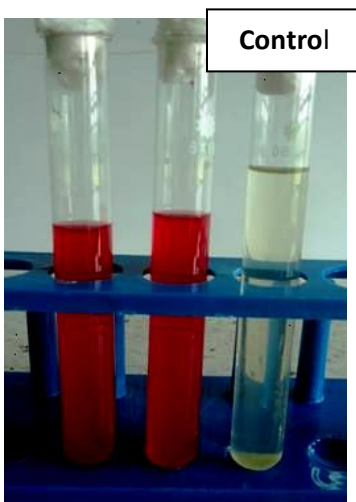
**Plate 14:** Growth of *Salmonella* on EMB agar showing pink color colonies.



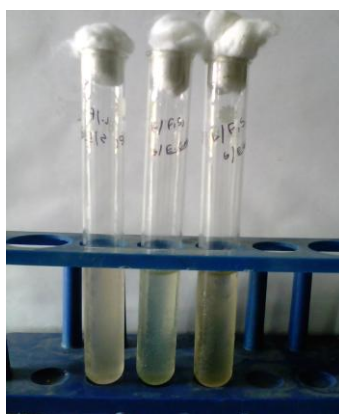
**Plate 15:** Growth of *Salmonella* in TSI agar slant showing red slant and yellow butt, black color due to H<sub>2</sub>S production.



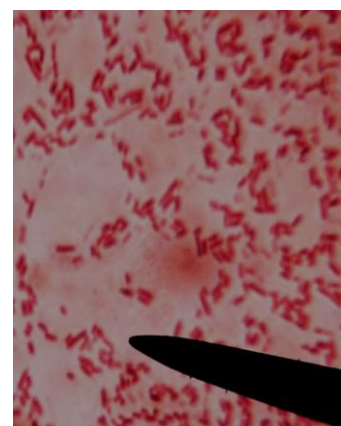
**Plate 16:** MIU test for *Salmonella*



**Plate 17:** *Salmonella* showing positive result with bright red color in MR test



**Plate 18:** VP test of *Salmonella* showing no change of the medium (left tube).



**Plate 19:** *Salmonella* showing Gram negative test small rods arranged singly or pairs (100X)